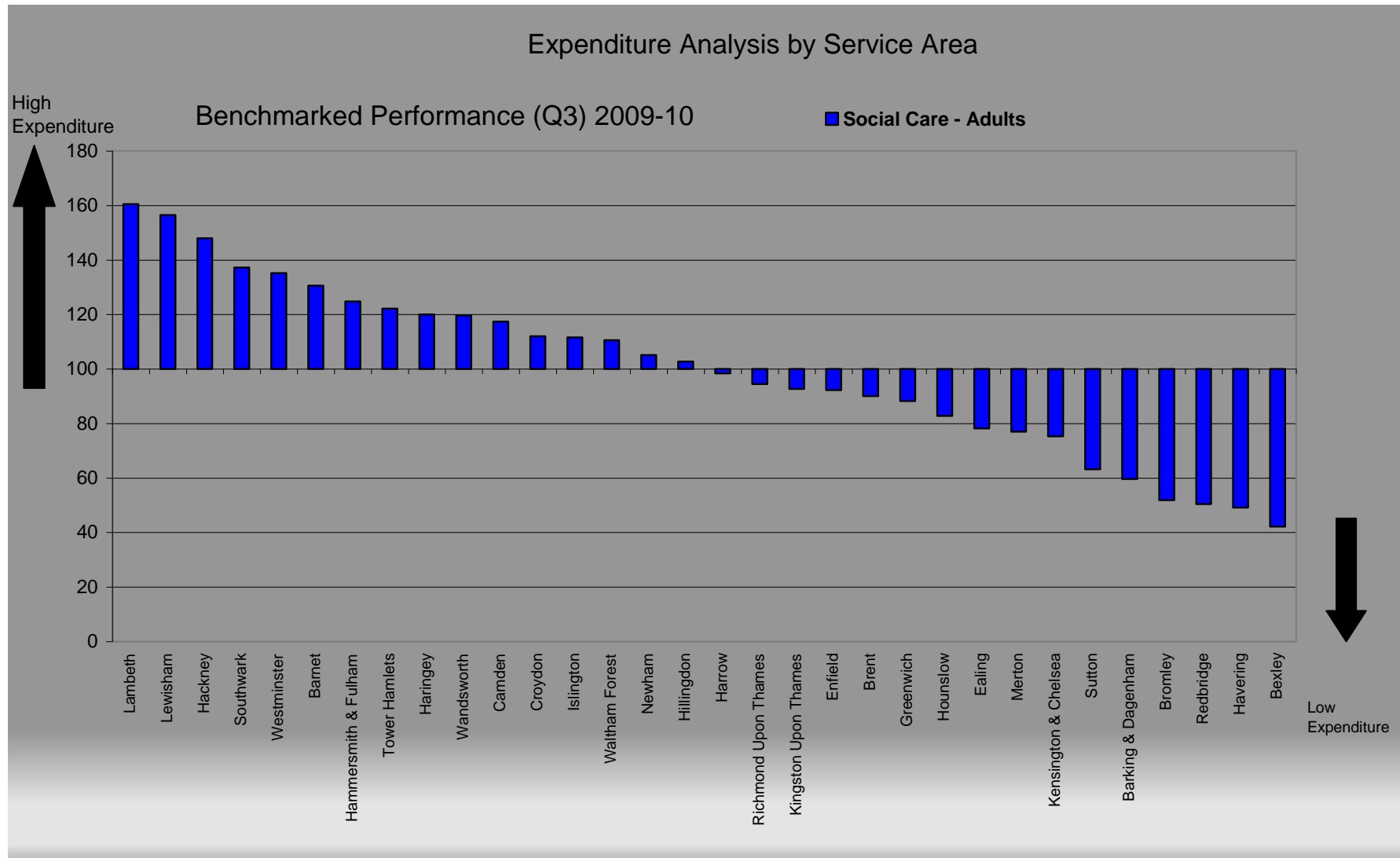


Appendix A - Example of extract from Cipfa stats

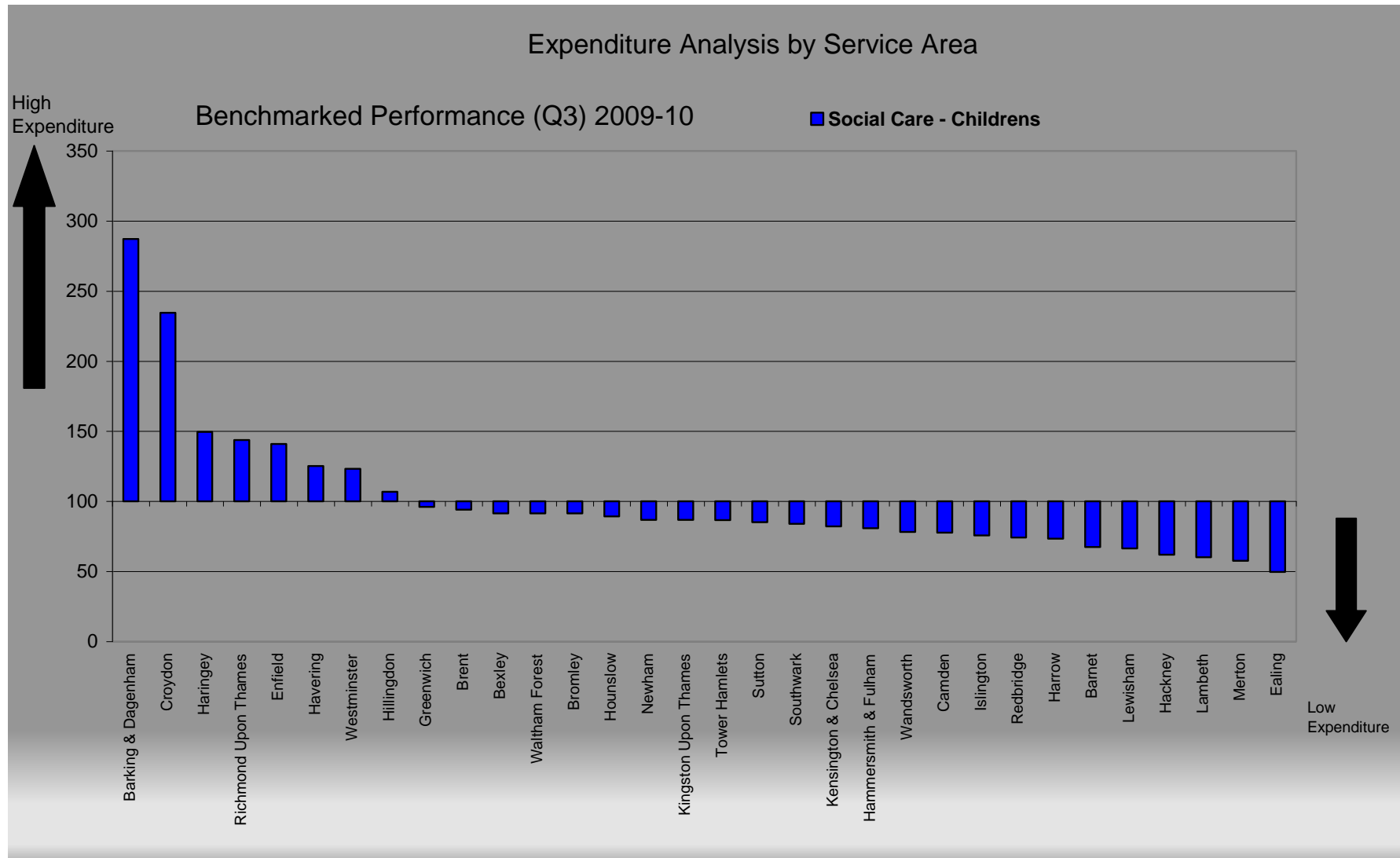
Source: CIPFA Social Care Actuals Statistics 2008-

		[10]	[29]	[320]	[321]	[322]	[323]	
Code	Authority Name	Authority Class	Analysis of Gross Total Cost - Adults' Services - Older People (Aged 65 or over)	Summary of Adults' Social Care Income and Expenditure - Net Total Cost	Memorandum: Home Care - All Adult Ages - Income	Memorandum: Home Care - All Adult Ages - Net Total Cost	Memorandum: Home Care - All Adult Ages - Number of Clients receiving Home Care at 31/03/2009	Memorandum: Home Care - All Adult Ages: Gross Cost per Client per week
			%	£'000	£'000	£'000	number	£
E5030	Barking and Dagenham	OL	59.13274254	48552	-891	10127	1065	195.0704225
E5031	Barnet	OL	48.31397231	94381.7112	-1689.622	15161.253	1819	178.150241
E5032	Bexley	OL	56.59504455	50753	-2291	6639	1062	161.7050558
E5033	Brent	OL	46.25479182	87187	-2113	10350	1902	126.0110815
E5034	Bromley	OL	56.00871662	72517	-3628	10255	2346	112.5319693
E5010	City of London	CL	40.73707167	5427.54539	-69.32011	951.6776	99	198.3290035
E5036	Ealing	OL	51.46225633	70399	-1045	13655	2897	97.58105202
E5037	Enfield	OL	50.56608921	82013	-3911	20367	1760	265.2753497
E5013	Hackney	IL	47.35863366	78179.074	-1697	14565	1413	221.3239697
E5014	Hammersmith and Fulham	IL	50.74522781	52971	-1137	11675	1454	169.4529679
E5039	Haringey	OL	38.13123027	61505	-1548	9959	1034	214.0120518
E0701	Harrow	OL	47.41034445	**	-1516	5830	1126	125.4611286
E1801	Havering	OL	54.30717173	54669.888	-1796.052	10423.848	1548	151.8075432
E5042	Hillingdon	OL	48.90765231	66781.14615	-1580.455	10059.86261	1151	194.4850232
E2101	Hounslow	OL	43.12511981	54930	-1063	8848	1063	179.3002388
E5016	Islington	IL	51.65254533	67883.373	-1648.908	13904.245	1751	170.0975157
E2221	Kensington and Chelsea	IL	52.04272152	52788.87395	-1689.0262	8433.438438	1540	126.4044036
E4301	Kingston upon Thames	EC	55.18635699	327404	-10935	54524	11535	109.1310727
E2321	Lambeth	OL	52.71860039	41008	-1566	4394	821	139.6046098
E2520	Lewisham	EU	46.66000754	77768.25246	-2197	10808	2313	107.0038911
E0702	Merton	MD	41.39722622	140799	-9817	32660	3397	238.0324268
E2620	Newham	EU	55.83198478	45156	-1762	7527	1246	143.366465
E0703	Redbridge	EU	47.69814936	53816.20151	-2280.45257	9757.41053	1571	147.147127
E4205	Richmond upon Thames	OL	54.04707669	62767	-2387	11159	1492	174.5978552
E4303	Southwark	EU	57.2522307	41881	-1407	10184	2475	89.75912976
E3901	Sutton	MD	56.34028407	67711	-3652	12056	1942	155.549394
E4209	Tower Hamlets	EU	56.05666862	35282	-917	5485	691	178.1698764
E5021	Waltham Forest	MD	50.94250097	54613	-1572	9593	996	215.5738338
E0602	Wandsworth	MD	50.69787114	72372	-3152	9612	2059	119.2139575
E4210	Westminster	EU	50.09111834	**	-3783	8561	1045	218.5866765

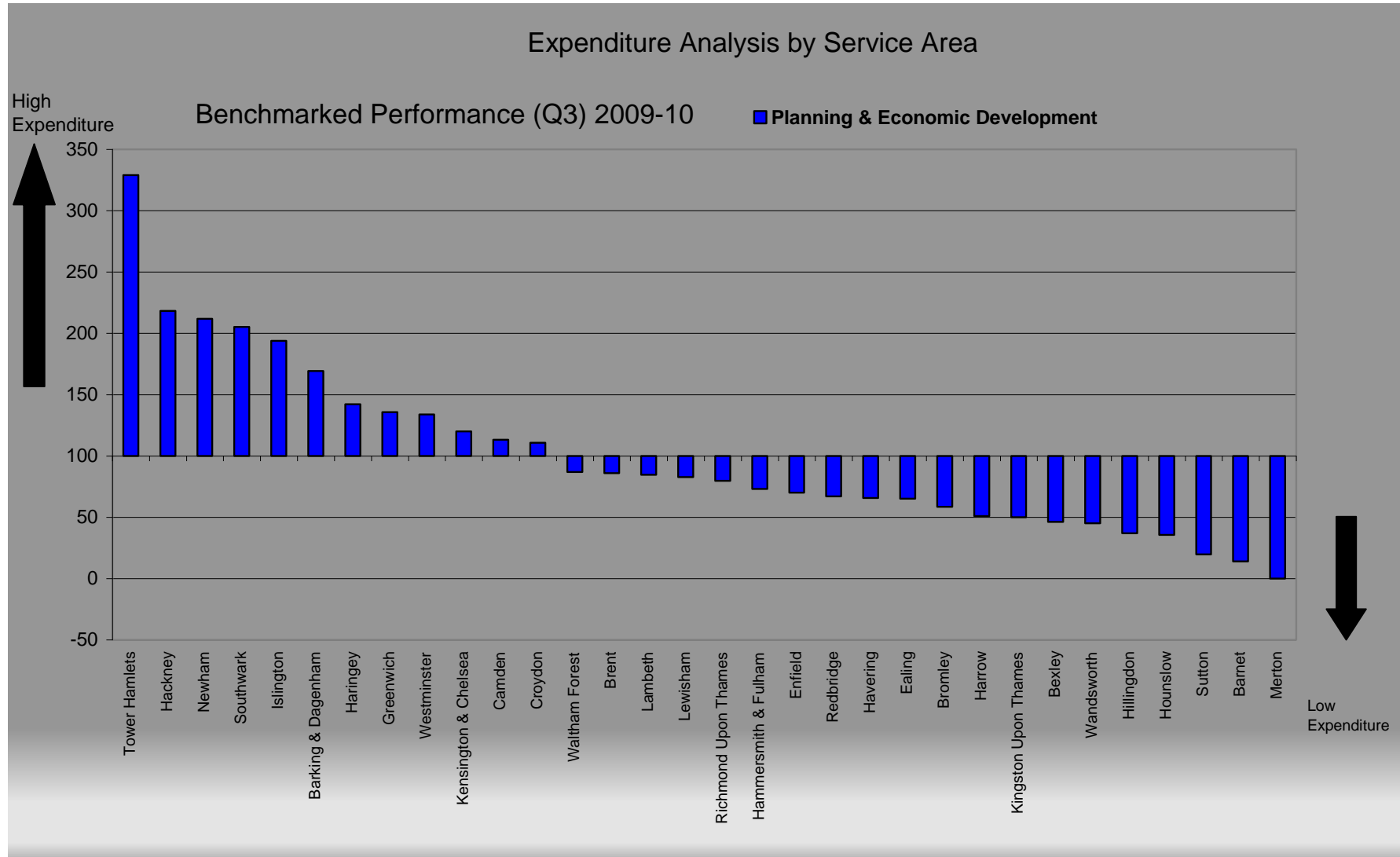
Appendix B-VfM benchmarking Social Care



Appendix C VfM Benchmarking Social Care



Appendix D VfM Planning and Economic Development



Appendix E – LDSA Benchmarking Results 2008 to 2009

Question No.	3	6	8	19	20	21	28	39	41	42	45	48	50	51	65		
	% apps ack in 3 days	% plans vetted & response in 15 days	% decisions in statutory time limits	Phone answering	Completion certificates	Corp complaint response time- no. Complaints	15 day response time for post incl amendments	Net cost of charge earning service per head of population (36)-	No of apps per fee earning tech staff	Charge income per application (38)/(30)	Cost(x£1000) of bc per staff member	% live sites visited in last 3 months	No of site visits per application{(32)/(30)}	No of site visits per tech off 32/((33+33a)*37)	Quality score	TOTAL SCORE	OVERALL RANKING
Authority name																	
Bar & Dag	24	15	18	7	16	18	10	19	3	20	24	13	19	15	16	493	21
Barnet	22	17	23	22	25	20	21	7	8	16	18	21	25	25	23	610	25
Belfast	13	21	20	22	18	11	21	25	16	12	2	15	11	20	17	533	22
Bexley	1	1	1	11	8	20	1	22	1	22	25	4	13	7	5	263	6
Brent	1	1	1	18	19	18	1	10	14	10	5	11	10	16	1	236	5
Bromley	15	22	11	7	17	7	7	27	9	24	11	7	6	11	3	297	10
Camden	26	25	26	22	25	26	21	26	26	26	26	21	25	25	26	763	26
City of London	16	23	1	11	19	1	10	1	25	1	15	1	1	17	5	281	8
Croydon	10	14	1	9	16	14	10	17	7	21	17	13	21	10	17	405	17
Ealing	14	5	1	1	14	20	14	18	13	13	19	17	12	9	12	370	15
Enfield	11	9	18	1	1	1	1	16	11	15	9	21	14	12	5	321	11
Greenwich	26	25	26	22	25	26	21	26	26	26	26	21	25	25	26	763	26
Hackney	25	24	24	22	23	25	21	24	20	11	6	1	15	21	24	587	24
Ham & Fulham	11	8	1	11	9	14	16	9	19	7	21	4	16	22	12	348	13
Haringey	20	10	1	1	1	9	20	12	2	25	16	21	22	3	17	384	16
Harrow	1	6	1	20	9	14	10	4	12	14	3	11	6	2	12	233	4
Havering	21	15	1	10	22	1	1	23	6	23	13	6	17	5	17	364	14
Hillingdon	26	25	26	22	25	26	21	26	26	26	26	21	25	25	26	763	26
Hounslow	26	25	26	22	25	26	21	26	26	26	26	21	25	25	26	763	26
Islington	1	12	20	16	14	1	17	2	17	6	4	10	4	8	1	287	9
Kensington	1	1	1	19	12	1	1	20	18	8	10	1	7	18	5	228	3
Kingston	26	25	26	22	25	26	21	26	26	26	26	21	25	25	26	763	26
Lambeth	26	25	26	22	25	26	21	26	26	26	26	21	25	25	26	763	26
Lewisham	26	25	26	22	25	26	21	26	26	26	26	21	25	25	26	763	26
Merton	1	1	1	16	1	1	1	3	23	4	1	21	3	14	5	179	1
Newham	18	17	25	7	1	1	19	13	21	5	14	19	8	19	25	490	20
Redbridge	1	7	1	21	1	11	1	11	4	19	8	19	5	1	5	218	2
Richmond	1	13	1	1	1	9	1	5	10	18	7	18	20	11	12	267	7
Southwark	19	25	22	1	21	1	21	8	15	9	12	21	24	23	17	547	23
Sutton	26	25	26	22	25	26	21	26	26	26	26	21	25	25	26	763	26
Tower Hamlets	17	19	17	22	24	20	18	6	24	2	20	16	2	13	17	482	19
Wal Forest	1	19	1	1	13	20	15	14	5	17	22	8	18	6	3	342	12
Wandsworth	26	25	26	22	25	26	21	26	26	26	26	21	25	25	26	763	26
Westminster	23	11	1	15	11	14	21	15	22	3	23	9	23	24	5	425	18
Weighting	1	3	3	1	2	1	3	3	1	1	2	3	2	2	3		
Sort order	0	0	0	0	0	1	0	1	0	0	1	0	0	0	0		

Appendix F

BUILDING CHARGE NOTICES

Charges comparison of neighbouring boroughs Feb 2009 excluding VAT

	sch1	sch2<10	10 to 40	40 to 60	sch3<2000
Bexley	425	280	430	580	224
Dartford	612.92	347.37	525.46	703.68	169.44
Lewisham	391	255	400	530	130
Greenwich	450	232.63	341.77	446.78	110.25
Sevenoaks	492.26	261.09	414.53	534.76	121.55
Croydon				527.66	158.3
Sutton	565	340	490	640	202
Average	489	286	434	566	159
Average 10%	538	315	477	622	175
Bromley	527	272.34	408.51	536.17	170
Bromley Proposed 09/10	610	315	455	595	195
Total 09/10 Charges	610	315	455	595	195

All charges are for full building charge notices.

Sch 1 charges are for new dwellings, where estimated cost is unknown

Schl 2 charges are for extensions and small buildings, the figures representing the size in m2 of the extension

Schl 3 are for new dwellings over 300m2, where the estimated cost of the work is known. i.e. 2000 =£2000

Appendix G - Comparison with outer London Boroughs 2008/09

Source: CIPFA Social Care Actuals Statistics 2008-09

Source: CIPFA Social Care Actuals Statistics 2008-09			[321]	[322]	[327]	[328]
Code	Authority Name	Authority Class	Memorandum: Home Care - All Adult Ages - Net Total Cost £'000	Memorandum: Home Care - All Adult Ages - Number of Clients receiving Home Care at 31/03/2009 number	Memorandum: Home Care - All Adult Ages: Autumn 2008 sample week - Gross Cost per Hour - Own Provision £ p	Memorandum: Home Care - All Adult Ages: Autumn 2008 sample week - Gross Cost per Hour - Provision by Others £ p
E5030	Barking and Dagenham	OL	10127	1065	42.96785304	17.86286153
E5031	Barnet	OL	15161.253	1819	21.59502028	16.10993697
E5032	Bexley	OL	6639	1062	25.08361204	12.35885546
E5033	Brent	OL	10350	1902	0	14.94407513
E5034	Bromley	OL	10255	2346	13.74851217	14.10938352
E5035	Croydon	OL	9245	1814	14.27702947	10.96655074
E5036	Ealing	OL	13655	2897	62.17948718	11.38370369
E5037	Enfield	OL	20367	1760	38.89557839	14.89855423
E5038	Haringey	OL	9959	1034	43.58125318	13.37008937
E5039	Harrow	OL	5830	1126	..	16.89634399
E5040	Havering	OL	10423.848	1548	45.07373092	14.81927821
E5041	Hillingdon	OL	10059.86261	1151	32.61674652	15.47635224
E5042	Hounslow	OL	8848	1063	30.64725166	12.32883271
E5043	Kingston upon Thames	OL	4394	821	32.29561918	13.35400152
E5044	Merton	OL	7998	816	39.58078958	10.30000593
E5045	Newham	OL	12359.38811	1776	33.391986	10.32240789
E5046	Redbridge	OL	11159	1492	48.16121926	12.55170582
E5047	Richmond upon Thames	OL	6046.428152	888	0	..
E5048	Sutton	OL	8040	1073	48.8410596	17.79178135
E5049	Waltham Forest	OL	6549	1095	26.11498175	8.941812789